

---

## Product Datasheet

### TOP1MT Antibody / Topoisomerase I mitochondrial (orb699484)

**Description**

DNA topoisomerases are nuclear enzymes that

eukaryotic ...

**Species/Host**

Mouse

**Reactivity**

Human

**Conjugation**

Unconjugated

**Tested Applications**

IHC-P, WB

**Immunogen**

Recombinant full-length human TOP1MT protein was used as the immunogen for the TOP1MT antibody.

**Preservatives**

0.2 mg/ml in 1X PBS with 0.1 mg/ml rAlbumin (US sourced), 0.05% sodium azide

**Storage**

Store the TOP1MT antibody at 2-8°C (with azide) or aliquot and store at -20°C or colder (without azide).

**Note**

For research use only

**Application notes**

Optimal dilution of the TOP1MT antibody should be determined by the researcher.

**Formula**

0.2 mg/ml in 1X PBS with 0.1 mg/ml BSA (US sourced), 0.05% sodium azide

**Isotype**

Mouse IgG2b, kappa

**Clonality**

Monoclonal

**Purity**

Protein G affinity chromatography

**Uniprot ID**

**Q969P6**

**Hazard Information**

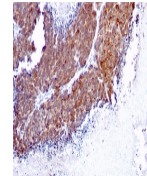
This TOP1MT antibody is available for research use only.

**Dilution Range**

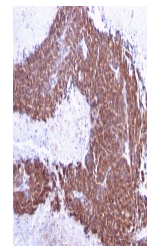
Western blot: 1-2ug/ml, Immunohistochemistry (FFPE): 1-2ug/ml for 30 minutes at RT

**Expiration Date**

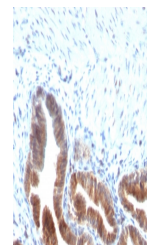
12 months from date of receipt.



IHC staining of FFPE human melanoma with...



IHC staining of FFPE human melanoma with...



IHC staining of FFPE human gallbladder w...