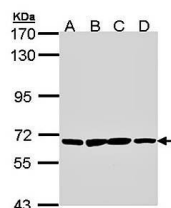


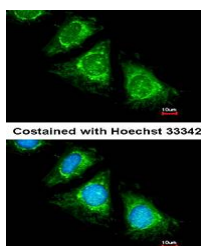
Product Datasheet

PABP1-dependent poly A-specific ribonuclease subunit PAN3 antibody (orb69858)

Description	PABP1-dependent poly A-specific ribonuclease subunit PAN3 antibody
Species/Host	Rabbit
Reactivity	Human
Conjugation	Unconjugated
Tested Applications	IF, WB
Storage	Store at -20°C for long term preservation (recommended). Store at 4°C for short term use.
Note	For research use only
Clonality	Recombinant
Uniprot ID	Q58A45
Expiration Date	12 months from date of receipt.



Western Blot analysis of A:H1299, whole ...



Confocal immunofluorescence analysis of ...