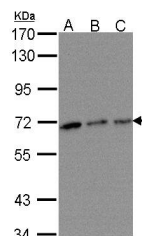


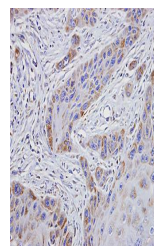
## Product Datasheet

### TROVE2 antibody (orb69798)

|                            |  |
|----------------------------|--|
| <b>Description</b>         | TROVE2 antibody  |
| <b>Species/Host</b>        | Rabbit   |
| <b>Reactivity</b>          | Human  |
| <b>Conjugation</b>         | Unconjugated   |
| <b>Tested Applications</b> | IHC, WB  |
| <b>Storage</b>             | Store at -20°C for long term preservation (recommended).<br>Store at 4°C for short term use. |
| <b>Note</b>                | For research use only  |
| <b>Clonality</b>           | Recombinant  |
| <b>Uniprot ID</b>          | <b>P10155</b>  |
| <b>Expiration Date</b>     | 12 months from date of receipt.  |



Western Blot analysis of A:293T



B:A431,  
C:H1299  
whole cell lysate using

...