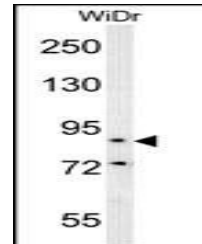


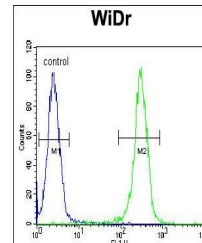
Product Datasheet

SLC39A10 antibody (orb696991)

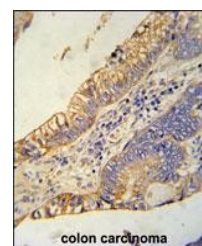
Description	Rabbit polyclonal antibody to SLC39A10
Species/Host	Rabbit
Reactivity	Human
Conjugation	Unconjugated
Tested Applications	FC, IHC-P, WB
Immunogen	Synthetic Peptide
Target	SLC39A10
Form/Appearance	Purified polyclonal antibody supplied in PBS with 0.09% (W/V) sodium azide. This antibody is purified through a protein A column, followed by peptide affinity purification.
Storage	Maintain refrigerated at 2-8°C for up to 2 weeks. For long term storage store at -20°C in small aliquots to prevent freeze-thaw cycles
Note	For research use only
Isotype	Rabbit IgG
Clonality	Polyclonal
MW	94132
Uniprot ID	Q9ULF5
NCBI	NP_065075.1 , NP_001120729.1
Dilution Range	WB: 1:1000, IHC-P: 1:50~100, FACS: 1:10~50
Expiration Date	12 months from date of receipt.



Western blot analysis of WiDr cell line ...



Flow cytometric analysis of WiDr cells u...



Immunohistochemical staining of human co...