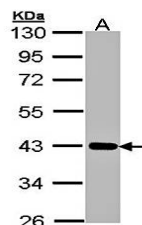


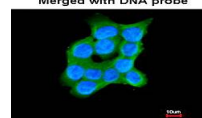
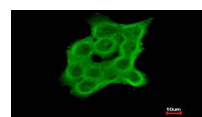
Product Datasheet

Cartilage-associated protein antibody (orb69667)

Description	Cartilage-associated protein antibody
Species/Host	Rabbit
Reactivity	Human
Conjugation	Unconjugated
Tested Applications	IF, WB
Storage	Store at -20°C for long term preservation (recommended). Store at 4°C for short term use.
Note	For research use only
Clonality	Recombinant
Uniprot ID	075718
Expiration Date	12 months from date of receipt.



Western blot analysis of whole cell lysa...



Confocal immunofluorescence analysis of ...