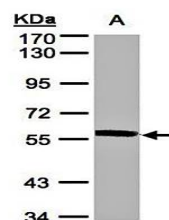


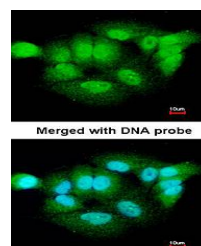
Product Datasheet

XPNPEP3 antibody (orb69661)

Description	XPNPEP3 antibody
Species/Host	Rabbit
Reactivity	Human
Conjugation	Unconjugated
Tested Applications	IF, WB
Storage	Store at -20°C for long term preservation (recommended). Store at 4°C for short term use.
Note	For research use only
Clonality	Recombinant
Uniprot ID	Q9NQH7
Expiration Date	12 months from date of receipt.



Western blot analysis of A:A431 whole ce...



Confocal immunofluorescence analysis of ...