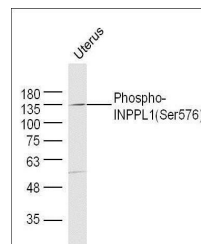


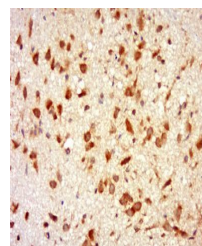
Product Datasheet

SHP2 (phospho-Ser576) antibody (orb6945)

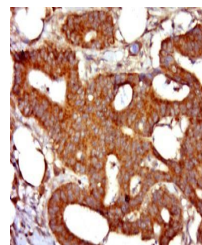
Description	SHP2 (phospho-Ser576) antibody
Species/Host	Rabbit
Reactivity	Mouse, Rat
Conjugation	Unconjugated
Tested Applications	IHC-P, WB
Immunogen	KLH conjugated Synthesised phosphopeptide derived from human SHIP1 around the phosphorylation site of Ser576 (QN(p-Y)LD)
Target	Phospho-INPPL1 (Ser576)
Preservatives	0.01M TBS(pH7.4) with 1% rAlbumin, 0.03% Proclin300 and 50% Glycerol.
Form/Appearance	Liquid
Concentration	1mg/ml
Storage	Shipped at 4°C. Store at -20 °C for one year. Avoid repeated freeze/thaw cycles.
Note	For research use only
Isotype	IgG
Clonality	Polyclonal
MW	139 kDa
Uniprot ID	O15357
Dilution Range	WB=1:500-2000, IHC-P=1:100-500
Expiration Date	12 months from date of receipt.



Western blot analysis of mouse Uterus ly...



Immunohistochemical staining of rat brai...



Immunohistochemical staining of colon ca...