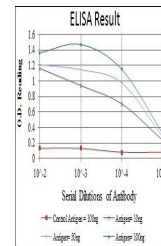


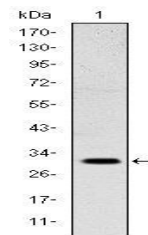
Product Datasheet

MSX1 Antibody (orb69411)

Description	Mouse monoclonal antibody to MSX1
Species/Host	Mouse
Reactivity	Human
Conjugation	Unconjugated
Tested Applications	ELISA, WB
Immunogen	Purified recombinant fragment of human MSX1 expressed in E. Coli.
Preservatives	Ascitic fluid containing 0.03% sodium azide.
Concentration	1mg/ml
Storage	Maintain refrigerated at 2-8°C for up to 2 weeks. For long term storage store at -20°C in small aliquots to prevent freeze-thaw cycles.
Note	For research use only
Isotype	Mouse IgG1
Clonality	Monoclonal
MW	31kDa
Entrez	4487
Dilution Range	WB: 1/500 - 1/2000; ELISA: 1/10000
Expiration Date	12 months from date of receipt.



Line graph illustrates about the Ag-Ab r...



Western blot analysis of NTERA-2 cell ly...