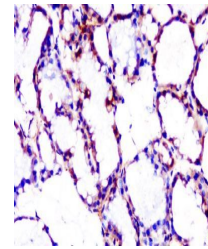


Product Datasheet

SHC (phospho-Tyr427) antibody (orb6937)

Description	SHC (phospho-Tyr427) antibody
Species/Host	Rabbit
Reactivity	Human, Mouse
Conjugation	Unconjugated
Tested Applications	FC, IHC-P, WB
Immunogen	KLH conjugated Synthesised phosphopeptide derived from human SHC around the phosphorylation site of Tyr427 (PS(p-Y)VN)
Target	phospho-SHC1 (Tyr427)
Preservatives	0.01M TBS(pH7.4) with 1% rAlbumin, 0.03% Proclin300 and 50% Glycerol.
Form/Appearance	Liquid
Concentration	1mg/ml
Storage	Shipped at 4°C. Store at -20 °C for one year. Avoid repeated freeze/thaw cycles.
Note	For research use only
Isotype	IgG
Clonality	Polyclonal
MW	63 kDa
Uniprot ID	P29353
Dilution Range	WB=1:500-2000, IHC-P=1:100-500, Flow-Cyt=1ug/Test
Expiration Date	12 months from date of receipt.



Immunohistochemical staining of human ma...