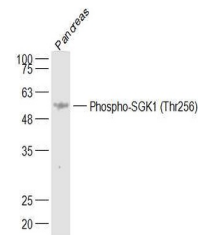


Product Datasheet

SGK1 (phospho-Thr256) antibody (orb6932)

Description	SGK1 (phospho-Thr256) antibody
Species/Host	Rabbit
Reactivity	Human, Mouse
Conjugation	Unconjugated
Tested Applications	FC, ICC, IHC-P, WB
Immunogen	KLH conjugated Synthesised phosphopeptide derived from human SGK1 around the phosphorylation site of Thr256 (TS(p-T)FC)
Target	Phospho-SGK1 (Thr256)
Preservatives	0.01M TBS(pH7.4) with 1% rAlbumin, 0.03% Proclin300 and 50% Glycerol.
Form/Appearance	Liquid
Concentration	1mg/ml
Storage	Maintain refrigerated at 2-8°C for up to 2 weeks. For long term storage store at -20°C in small aliquots to prevent freeze-thaw cycles.
Note	For research use only
Isotype	IgG
Clonality	Polyclonal
MW	49 kDa
Uniprot ID	O00141
Dilution Range	WB=1:500-2000, IHC-P=1:100-500, Flow-Cyt=2ug/Test, IHC-F=1:100-500, IF=1:100-500, ELISA=1:5000-10000
Expiration Date	12 months from date of receipt.



Western blot:Pancreas (Mouse);Primary:An...