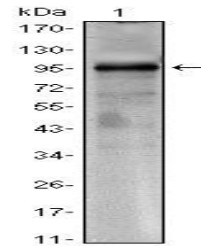


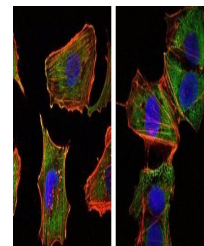
Product Datasheet

CRTC1 Antibody (orb69289)

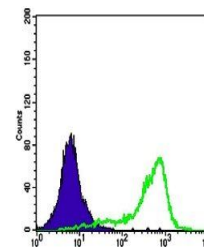
Description	Mouse monoclonal antibody to CRTC1
Species/Host	Mouse
Reactivity	Human
Conjugation	Unconjugated
Tested Applications	ELISA, FC, ICC, WB
Immunogen	Purified recombinant fragment of human CRTC1 expressed in E. Coli.
Preservatives	Ascitic fluid containing 0.03% sodium azide.
Concentration	1mg/ml
Storage	Maintain refrigerated at 2-8°C for up to 2 weeks. For long term storage store at -20°C in small aliquots to prevent freeze-thaw cycles.
Note	For research use only
Isotype	Mouse IgG2b
Clonality	Monoclonal
MW	67kDa
Entrez	23373
Dilution Range	WB: 1/500 - 1/2000; ICC: 1/200 - 1/1000; RCM: 1/200 - 1/400; ELISA: 1/10000
Expiration Date	12 months from date of receipt.



Western blot analysis of CRTC1-hlgFc tr...



Immunofluorescence analysis of U251 (lef...



Flow cytometric analysis of K562 cells u...