
Product Datasheet

hCG Alpha chain antibody (orb692673)

Description

hCG Alpha chain antibody

Species/Host

Goat

Reactivity

Human

Conjugation

Unconjugated

Tested

ELISA, WB

Applications
Immunogen

Anti-Human Chorionic Gonadotropin Alpha Antibody was prepared from whole goat serum produced by repeated immunizations with Hu Chorionic Gonadotropin Alpha Subunit protein.

Preservatives

0.01% (w/v) Sodium Azide

Form/Appearance

Liquid (sterile filtered)

Concentration

1.0mg/mL

Storage

Store vial at -20° C or below prior to opening. This vial contains a relatively low volume of reagent (25 µL). To minimize loss of volume dilute 1:10 by adding 225 µL of the buffer stated above directly to the vial. Recap, mix thoroughly and briefly centrifuge to collect the volume at the bottom of the vial. Use this intermediate dilution when calculating final dilutions as recommended below. Store the vial at -20°C or below after dilution. Avoid cycles of freezing and thawing.

Note

For research use only

Application notes

Anti-Human Chorionic Gonadotropin (hCG) Alpha Antibody has been tested in ELISA and WB. Expect a band at ~14.9kDa for the alpha chain in western blot using appropriate tissues and lysates. ELISA reactivity expected against alpha hCG with an expected titer of ~1:100,000 and full hCG at ~1:50,000 dilution.

Isotype

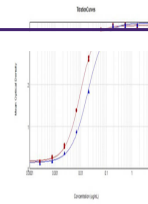
IgG

Clonality

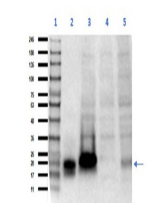
Polyclonal

Purity

This affinity purified antibody is directed against hCG alpha. This product was affinity purified from monospecific antiserum by immunoaffinity purification. This product reacts with Full Human Chorionic Gonadotropin (hCG) and Human Chorionic Gonadotropin Alpha chain (α-hCG).

Uniprot ID
[P01215](#)
NCBI
[NP_000726.1](#)


ELISA results of Goat Anti-Human Chorion...



Western Blot of Goat Anti-Human Chorioni...