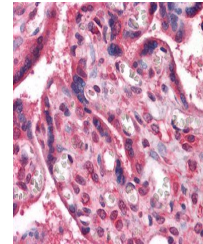


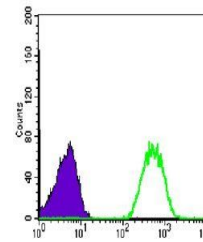
Product Datasheet

NME1 Antibody (orb69267)

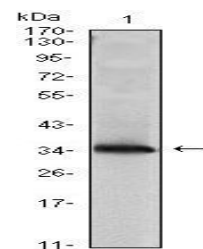
Description	Mouse monoclonal antibody to NME1
Species/Host	Mouse
Reactivity	Human
Conjugation	Unconjugated
Tested Applications	ELISA, FC, ICC, IHC
Immunogen	Purified recombinant fragment of human NME1 expressed in E. Coli.
Preservatives	Ascitic fluid containing 0.03% sodium azide.
Concentration	1mg/ml
Storage	Maintain refrigerated at 2-8°C for up to 2 weeks. For long term storage store at -20°C in small aliquots to prevent freeze-thaw cycles.
Note	For research use only
Isotype	Mouse IgG1
Clonality	Monoclonal
MW	17kDa
Entrez	4830
Dilution Range	IHC: 1/200 - 1/1000; ICC: 1/200 - 1/1000; RCM: 1/200 - 1/400; ELISA: 1/10000
Expiration Date	12 months from date of receipt.



Immunohistochemical analysis of paraffin...



Flow cytometric analysis of Jurkat cells...



Western blot analysis of NME1-hlgGf tra...