

---

## Product Datasheet

**CD13/ANPEP Antibody (monoclonal, 5B9)  
(orb692237)**

**Description**

CD13/ANPEP Antibody (monoclonal, 5B9)

**Species/Host**

Mouse

**Reactivity**

Human, Monkey, Rat

**Conjugation**

Unconjugated

**Tested Applications**

IHC, WB

**Immunogen**

E.coli-derived human CD13/ANPEP recombinant protein (Position: D148-S966).

**Form/Appearance**

Lyophilized

**Concentration**

Adding 0.2 ml of distilled water will yield a concentration of 500 µg/ml.

**Storage**

Store at -20°C for one year from date of receipt. After reconstitution, at 4°C for one month. It can also be aliquotted and stored frozen at -20°C for six months. Avoid repeated freeze-thaw cycles.

**Note**

For research use only

**Application notes**

Tested Species: In-house tested species with positive results. Other applications have not been tested. Optimal dilutions should be determined by end users. Add 0.2ml of distilled water will yield a concentration of 500ug/ml.

**Isotype**

Mouse IgG2b

**Clonality**

Monoclonal

**MW**

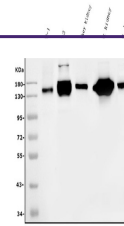
150 kDa

**Uniprot ID**
[P15144](#)
**Sensitivity**

&gt; 5000 cells

**Expiration Date**

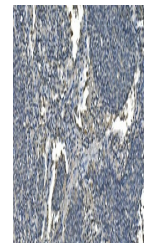
12 months from date of receipt.



Western blot analysis of CD13/ANPEP using anti-CD13/ANPEP antibody.



IHC analysis of CD13/ANPEP using anti-CD13/ANPEP antibody.



IHC analysis of CD13/ANPEP using anti-CD13/ANPEP antibody.