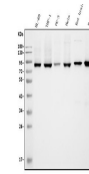

Product Datasheet

**APPL/APPL1 Antibody (monoclonal, 5G11)
(orb692234)**

Description

APPL/APPL1 Antibody (monoclonal, 5G11)

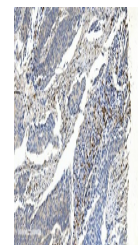
Species/Host	Mouse
Reactivity	Human, Mouse, Rat
Conjugation	Unconjugated
Tested Applications	FC, IHC, WB
Immunogen	E.coli-derived human APPL/APPL1 recombinant protein (Position: K91-R668).
Form/Appearance	Lyophilized
Concentration	Adding 0.2 ml of distilled water will yield a concentration of 500 µg/ml.
Storage	Store at -20°C for one year from date of receipt. After reconstitution, at 4°C for one month. It can also be aliquotted and stored frozen at -20°C for six months. Avoid repeated freeze-thaw cycles.
Note	For research use only
Application notes	Tested Species: In-house tested species with positive results. Other applications have not been tested. Optimal dilutions should be determined by end users. Add 0.2ml of distilled water will yield a concentration of 500ug/ml.
Isotype	Mouse IgG2a
Clonality	Monoclonal
MW	85 kDa
Uniprot ID	Q9UKG1
Expiration Date	12 months from date of receipt.



Western blot analysis of APPL/APPL1 usin...



IHC analysis of APPL/APPL1 using anti-AP...



IHC analysis of APPL/APPL1 using anti-AP...