

Product Datasheet

Aldolase/ALDOA Antibody (monoclonal, 6H8) (orb692226)

Description Aldolase/ALDOA Antibody (monoclonal, 6H8)

Species/Host Mouse

Reactivity Human

Conjugation Unconjugated

Tested Applications FC, ICC, IF, IHC, WB

Immunogen E.coli-derived human Aldolase/ALDOA recombinant protein (Position: E50-Y364).

Form/Appearance Lyophilized

Concentration Adding 0.2 ml of distilled water will yield a concentration of 500 µg/ml.

Storage Store at -20°C for one year from date of receipt. After reconstitution, at 4°C for one month. It can also be aliquotted and stored frozen at -20°C for six months. Avoid repeated freeze-thaw cycles.

Note For research use only

Application notes Tested Species: In-house tested species with positive results. Other applications have not been tested. Optimal dilutions should be determined by end users. Add 0.2ml of distilled water will yield a concentration of 500ug/ml.

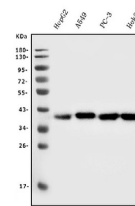
Isotype Mouse IgG2b

Clonality Monoclonal

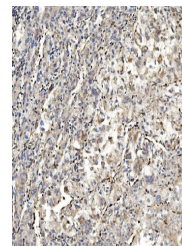
MW 39 kDa

Uniprot ID **P04075**

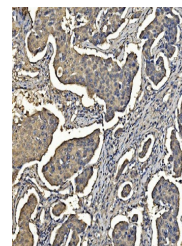
Expiration Date 12 months from date of receipt.



Western blot analysis of Aldolase/ALDOA ...



IHC analysis of Aldolase/ALDOA using ant...



IHC analysis of Aldolase/ALDOA using ant...