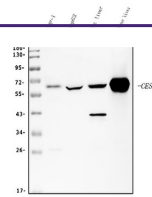

Product Datasheet

Liver Carboxylesterase 1/CES1 Antibody (monoclonal, 3F10) (orb692223)

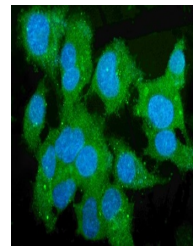
Description

Liver Carboxylesterase 1/CES1 Antibody

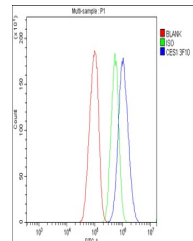
Species/Host	Mouse
Reactivity	Human, Mouse, Rat
Conjugation	Unconjugated
Tested Applications	FC, ICC, IF, IHC, WB
Immunogen	E. coli-derived human Liver Carboxylesterase 1/CES1 recombinant protein (Position: E99-A206).
Form/Appearance	Lyophilized
Concentration	Adding 0.2 ml of distilled water will yield a concentration of 500 µg/ml.
Storage	Store at -20°C for one year from date of receipt. After reconstitution, at 4°C for one month. It can also be aliquotted and stored frozen at -20°C for six months. Avoid repeated freeze-thaw cycles.
Note	For research use only
Application notes	Tested Species: In-house tested species with positive results. Other applications have not been tested. Optimal dilutions should be determined by end users. Add 0.2ml of distilled water will yield a concentration of 500ug/ml.
Isotype	Mouse IgG2b
Clonality	Monoclonal
MW	63 kDa
Uniprot ID	P23141
Expiration Date	12 months from date of receipt.



Western blot analysis of Liver Carboxyle...



IF analysis of Liver Carboxylesterase 1/...



Flow Cytometry analysis of HEPG2 cells u...