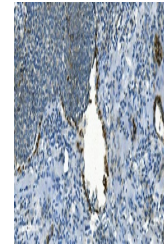


Product Datasheet

IDH2 Antibody (monoclonal, 2H4) (orb692220)

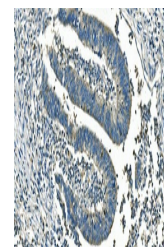
Description	IDH2 Antibody (monoclonal, 2H4)
Species/Host	Mouse
Reactivity	Human, Mouse, Rat
Conjugation	Unconjugated
Tested Applications	IHC, WB
Immunogen	A synthetic peptide corresponding to a sequence at the C-terminus of human IDH2 (413-447aa KDLAGCIHGLSNVKLNEHFLNTTDFLDTIKSNLDR), identical to the related mouse and rat sequences.
Form/Appearance	Lyophilized
Concentration	Adding 0.2 ml of distilled water will yield a concentration of 500 µg/ml.
Storage	Store at -20°C for one year from date of receipt. After reconstitution, at 4°C for one month. It can also be aliquotted and stored frozen at -20°C for six months. Avoid repeated freeze-thaw cycles.
Note	For research use only
Application notes	Tested Species: In-house tested species with positive results. Other applications have not been tested. Optimal dilutions should be determined by end users. Add 0.2ml of distilled water will yield a concentration of 500ug/ml.
Isotype	Mouse IgG1
Clonality	Monoclonal
MW	45 kDa
Uniprot ID	P48735
Expiration Date	12 months from date of receipt.



IHC analysis of IDH2 using anti-IDH2 ant...



IHC analysis of IDH2 using anti-IDH2 ant...



IHC analysis of IDH2 using anti-IDH2 ant...