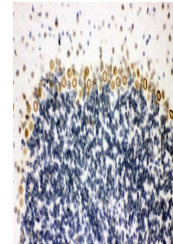


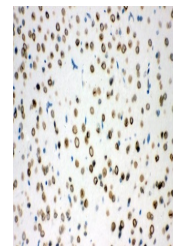
Product Datasheet

Sumo 1/SUMO1 Antibody (orb692211)

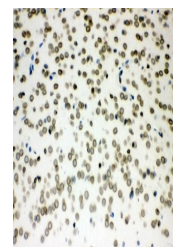
Description	Sumo 1/SUMO1 Antibody
Species/Host	Rabbit
Reactivity	Human, Mouse, Rat
Conjugation	Unconjugated
Tested Applications	FC, ICC, IF, IHC
Immunogen	A synthetic peptide corresponding to a sequence of human Sumo 1/SUMO1 (HLKLLKESYQCRRQGVPMNSLRFLFEGQRIADNHTPKEL).
Form/Appearance	Lyophilized
Concentration	Adding 0.2 ml of distilled water will yield a concentration of 500 µg/ml.
Storage	Store at -20°C for one year from date of receipt. After reconstitution, at 4°C for one month. It can also be aliquotted and stored frozen at -20°C for six months. Avoid repeated freeze-thaw cycles.
Note	For research use only
Application notes	Tested Species: In-house tested species with positive results. Other applications have not been tested. Optimal dilutions should be determined by end users. Add 0.2ml of distilled water will yield a concentration of 500µg/ml.
Isotype	Rabbit IgG
Clonality	Polyclonal
MW	12 kDa
Uniprot ID	P63165
Expiration Date	12 months from date of receipt.



IHC analysis of Sumo 1/SUMO1 using anti-...



IHC analysis of Sumo 1/SUMO1 using anti-...



IHC analysis of Sumo 1/SUMO1 using anti-...