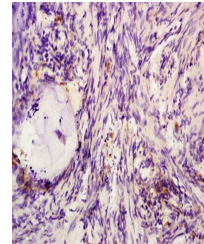


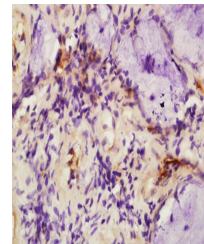
Product Datasheet

SATB1 (phospho-Ser47) antibody (orb6917)

Description	SATB1 (phospho-Ser47) antibody
Species/Host	Rabbit
Reactivity	Human, Mouse
Conjugation	Unconjugated
Tested Applications	FC, IHC-P
Immunogen	KLH conjugated Synthesised phosphopeptide derived from human SATB1 around the phosphorylation site of Ser47 (LG(p-S)TG)
Target	Phospho-SATB1 (Ser47)
Preservatives	0.01M TBS(pH7.4) with 1% rAlbumin, 0.03% Proclin300 and 50% Glycerol.
Form/Appearance	Liquid
Concentration	1mg/ml
Storage	Shipped at 4°C. Store at -20 °C for one year. Avoid repeated freeze/thaw cycles.
Note	For research use only
Isotype	IgG
Clonality	Polyclonal
MW	86 kDa
Uniprot ID	Q01826
Dilution Range	IHC-P=1:100-500, Flow-Cyt=1ug/test, IHC-F=1:100-500, IF=1:100-500, ELISA=1:5000-10000
Expiration Date	12 months from date of receipt.



Paraffin-embedded human rectal carcinoma...



Immunohistochemical analysis of formalin...