

Product Datasheet

Human ICOS Protein, mFc-His tag (orb689387)

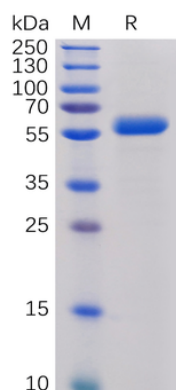
Description	Recombinant human ICOS protein with C-terminal mouse Fc and 6×His tag
Reactivity	Human
Target	ICOS
Preservatives	Lyophilized from sterile PBS, pH 7.4. Normally 5 % - 8% trehalose is added as protectants before lyophilization. Please see Certificate of Analysis for specific instructions.
Form/Appearance	Lyophilized from sterile PBS, pH 7.4. Normally 5 % - 8% trehalose is added as protectants before lyophilization. Please see Certificate of Analysis for specific instructions of reconstitution.
Storage	Store at -20°C to -80°C for 12 months in lyophilized form. After reconstitution, if not intended for use within a month, aliquot and store at -80°C (Avoid repeated freezing and thawing). Lyophilized proteins are shipped at ambient temperature.
Tag	C-Mouse Fc and 6×His Tag
Note	For research use only
Purity	The purity of the protein is greater than 95% as determined by SDS-PAGE and Coomassie blue staining.
Source	Mammalian
MW	The protein has a predicted molecular mass of 41.1 kDa after removal of the signal peptide.
Uniprot ID	Q9Y6W8
Expiration Date	6 months from date of receipt.

Biorbyt Ltd.

7 Signet Court, Swann's Road,
Cambridge, CB5 8LA, United Kingdom
Email: info@biorbyt.com, support@biorbyt.com
Phone: [+44 \(0\) 1223 859-353](tel:+44(0)1223859353) | Fax: [+1 \(415\) 651-8558](tel:+1(415)6518558)

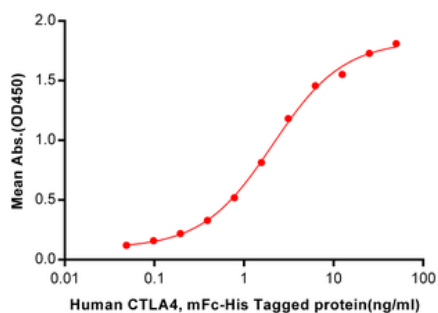
Biorbyt LLC.

68 TW Alexander Drive,
Durham, NC, 27713, United States
Email: info@biorbyt.com, support@biorbyt.com
Phone: [+1 \(415\) 906-5211](tel:+1(415)9065211) | Fax: [+1 \(415\) 651-8558](tel:+1(415)6518558)



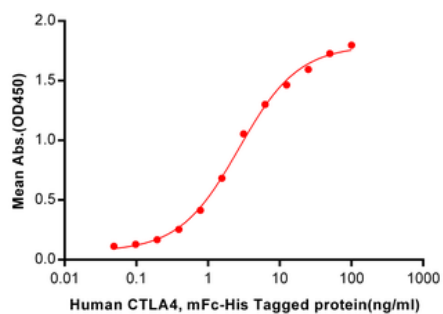
Human CTLA-4 Protein, mFc-His Tag on SDS-PAGE under reducing condition.

Human CTLA4, mFc-His Tagged protein ELISA
0.2 µg of Human B7-1, hFc Tagged protein per well



ELISA plate pre-coated by 2 µg/ml (100 µL/well) Human B7-1, hFc tagged protein orb689457 can bind Human CTLA4, mFc-His tagged protein (orb689378) in a linear range of 0.048-2.094 ng/ml.

Human CTLA4, mFc-His Tagged protein ELISA
0.2 µg of Human B7-2, hFc Tagged protein per well



ELISA plate pre-coated by 2 µg/ml (100 µL/well) Human B7-2, hFc tagged protein orb689458 can bind Human CTLA4, mFc-His tagged protein (orb689378) in a linear range of 0.048-2.694 ng/ml.

Biorbyt Ltd.

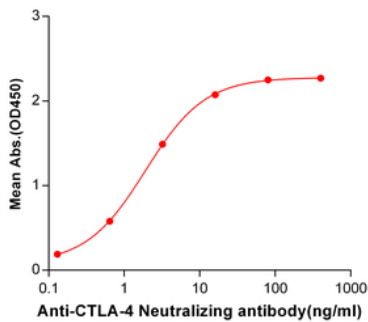
7 Signet Court, Swann's Road,
Cambridge, CB5 8LA, United Kingdom
Email: info@biorbyt.com, support@biorbyt.com
Phone: [+44 \(0\) 1223 859-353](tel:+44(0)1223859353) | Fax: [+1 \(415\) 651-8558](tel:+1(415)6518558)

Biorbyt LLC.

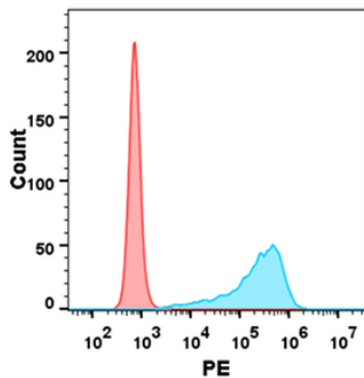
68 TW Alexander Drive,
Durham, NC, 27713, United States
Email: info@biorbyt.com, support@biorbyt.com
Phone: [+1 \(415\) 906-5211](tel:+1(415)9065211) | Fax: [+1 \(415\) 651-8558](tel:+1(415)6518558)

Human CTLA-4, mFc-His Tagged protein ELISA

0.2 µg of CTLA-4, mFc-His Tagged protein per well



ELISA plate pre-coated by 2 µg/ml (100 µL/well) Human CTLA-4, mFc-His tagged protein (orb689378) can bind Anti-CTLA-4 Neutralizing antibody orb689327 in a linear range of 0.13-16.0 ng/ml.



Flow cytometry analysis with 1 µg/mL Human CTLA4 Protein, mFc-His tag (orb689378) on Expi293 cells transfected with human B7-1 (Blue histogram) or Expi293 transfected with irrelevant protein (Red histogram).

Biorbyt Ltd.

7 Signet Court, Swann's Road,
Cambridge, CB5 8LA, United Kingdom
Email: info@biorbyt.com, support@biorbyt.com
Phone: [+44 \(0\) 1223 859-353](tel:+44(0)1223859353) | Fax: [+1 \(415\) 651-8558](tel:+1(415)6518558)

Biorbyt LLC.

68 TW Alexander Drive,
Durham, NC, 27713, United States
Email: info@biorbyt.com, support@biorbyt.com
Phone: [+1 \(415\) 906-5211](tel:+1(415)9065211) | Fax: [+1 \(415\) 651-8558](tel:+1(415)6518558)