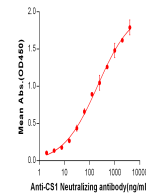


Product Datasheet

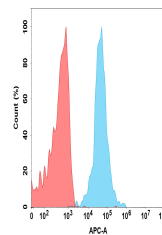
CS1 Antibody (orb689307)

Description	Anti-CS1 (elotuzumab biosimilar) mAb
Species/Host	Human
Reactivity	Human
Conjugation	Unconjugated
Tested Applications	ELISA, FC
Target	CS1
Form/Appearance	Powder
Storage	Maintain refrigerated at 2-8°C for up to 2 weeks. For long term storage store at -20°C in small aliquots to prevent freeze-thaw cycles.
Note	For research use only
Application notes	Lyophilized from sterile PBS, pH 7.4. Normally 5 % - 8% trehalose is added as protectants before lyophilization. Please see Certificate of Analysis for specific instructions of reconstitution.
Isotype	IgG1
Clonality	Recombinant
Uniprot ID	Q9NQ25
Dilution Range	ELISA 1:1000 Flow Cyt 1:100
Expiration Date	12 months from date of receipt.

Anti-CS1 (elotuzumab biosimilar) mAb ELISA



Line graph illustrates about the Ag-Ab r...



Flow cytometric analysis of Expi293 cell...