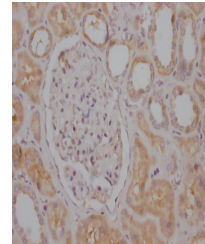


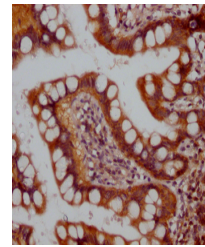
Product Datasheet

RPTOR antibody (orb689254)

Description	Rabbit monoclonal antibody to RPTOR
Species/Host	Rabbit
Reactivity	Human
Conjugation	Unconjugated
Tested Applications	ELISA, IHC
Immunogen	A synthesized peptide derived from human Raptor
Target	RPTOR
Preservatives	Rabbit IgG in phosphate buffered saline, pH 7.4, 150mM NaCl, 0.02% sodium azide and 50% glycerol.
Form/Appearance	Liquid
Storage	Maintain refrigerated at 2-8°C for up to 2 weeks. For long term storage store at -20°C in small aliquots to prevent freeze-thaw cycles.
Note	For research use only
Isotype	Rabbit IgG
Clonality	Monoclonal
Uniprot ID	Q8N122
Dilution Range	IHC-P:1:50-1:200
Expiration Date	12 months from date of receipt.



Immunohistochemical staining of human kidney tissue.



Immunohistochemical staining of human smooth muscle tissue.