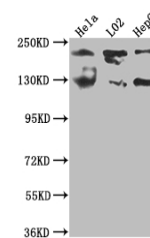


## Product Datasheet

### MGEA5 antibody (orb689232)

<b>Description</b>	Rabbit monoclonal antibody to MGEA5
<b>Species/Host</b>	Rabbit
<b>Reactivity</b>	Human
<b>Conjugation</b>	Unconjugated
<b>Tested Applications</b>	ELISA, WB
<b>Immunogen</b>	A synthesized peptide derived from human MGEA5
<b>Target</b>	MGEA5
<b>Preservatives</b>	Rabbit IgG in phosphate buffered saline, pH 7.4, 150mM NaCl, 0.02% sodium azide and 50% glycerol.
<b>Form/Appearance</b>	Liquid
<b>Storage</b>	Maintain refrigerated at 2-8°C for up to 2 weeks. For long term storage store at -20°C in small aliquots to prevent freeze-thaw cycles.
<b>Note</b>	For research use only
<b>Isotype</b>	Rabbit IgG
<b>Clonality</b>	Monoclonal
<b>Uniprot ID</b>	<a href="#">O60502</a>
<b>Dilution Range</b>	Recommended dilution: WB:1:500-1:5000
<b>Expiration Date</b>	12 months from date of receipt.



Western blot analysis of HeLa whole cell...