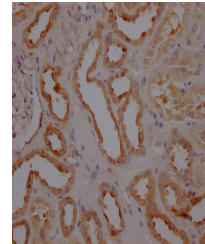


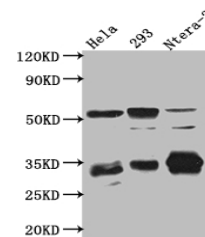
Product Datasheet

Caspase 3 antibody (orb689196)

Description	Rabbit monoclonal antibody to Caspase 3
Species/Host	Rabbit
Reactivity	Human
Conjugation	Unconjugated
Tested Applications	ELISA, IHC, WB
Immunogen	A synthesized peptide derived from human active + pro Caspase 3
Target	CASP3
Preservatives	Rabbit IgG in phosphate buffered saline, pH 7.4, 150mM NaCl, 0.02% sodium azide and 50% glycerol.
Form/Appearance	Liquid
Storage	Upon receipt, store at -20°C or -80°C. Avoid repeated freeze.
Note	For research use only
Isotype	Rabbit IgG
Clonality	Monoclonal
Uniprot ID	P42574
Dilution Range	WB:1:500-1:5000, IHC-P:1:50-1:200
Expiration Date	12 months from date of receipt.



Immunohistochemical staining of human kidney tissue.



Western blot analysis of HeLa whole cell lysates.