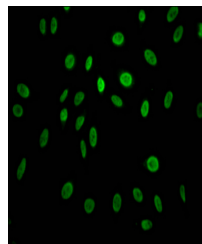


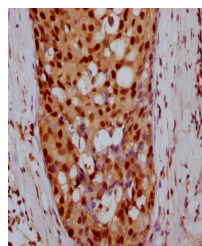
Product Datasheet

CCNE1 antibody (orb689189)

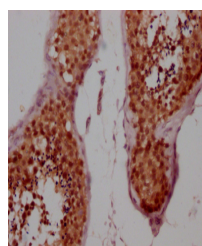
| | |
|----------------------------|---|
| Description | Rabbit monoclonal antibody to CCNE1 |
| Species/Host | Rabbit |
| Reactivity | Human |
| Conjugation | Unconjugated |
| Tested Applications | ELISA, IF, IHC |
| Immunogen | A synthesized peptide derived from human Cyclin E1 |
| Target | CCNE1 |
| Preservatives | Rabbit IgG in phosphate buffered saline, pH 7.4, 150mM NaCl, 0.02% sodium azide and 50% glycerol. |
| Form/Appearance | Liquid |
| Storage | Maintain refrigerated at 2-8°C for up to 2 weeks. For long term storage store at -20°C in small aliquots to prevent freeze-thaw cycles. |
| Note | For research use only |
| Isotype | Rabbit IgG |
| Clonality | Monoclonal |
| Uniprot ID | P24864 |
| Dilution Range | IHC-P:1:50-1:200, IF:1:20-1:200 |
| Expiration Date | 12 months from date of receipt. |



Immunofluorescence analysis of HeLa Cell...



Immunohistochemical staining of human br...



Immunohistochemical staining of human te...