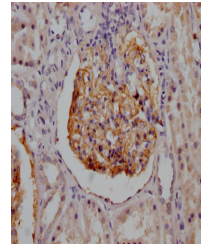


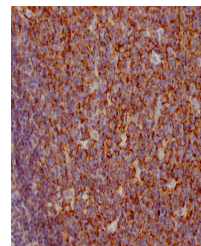
Product Datasheet

CD35 antibody (orb689157)

| | |
|----------------------------|---|
| Description | Rabbit monoclonal antibody to CD35 |
| Species/Host | Rabbit |
| Reactivity | Human |
| Conjugation | Unconjugated |
| Tested Applications | ELISA, IHC |
| Immunogen | A synthesized peptide derived from human CD35 |
| Target | CR1 |
| Preservatives | Rabbit IgG in phosphate buffered saline, pH 7.4, 150mM NaCl, 0.02% sodium azide and 50% glycerol. |
| Form/Appearance | Liquid |
| Storage | Maintain refrigerated at 2-8°C for up to 2 weeks. For long term storage store at -20°C in small aliquots to prevent freeze-thaw cycles. |
| Note | For research use only |
| Isotype | Rabbit IgG |
| Clonality | Monoclonal |
| Uniprot ID | P17927 |
| Dilution Range | IHC-P:1:50-1:200 |
| Expiration Date | 12 months from date of receipt. |



Immunohistochemical staining of human kidney tissue.



Immunohistochemical staining of human tissue.