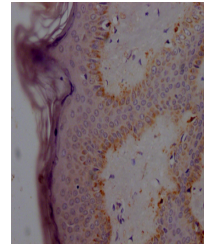


## Product Datasheet

### alpha Synuclein antibody (orb689129)

|                            |  |
|----------------------------|--|
| <b>Description</b>         | Rabbit monoclonal antibody to alpha Synuclein  |
| <b>Species/Host</b>        | Rabbit   |
| <b>Reactivity</b>          | Human  |
| <b>Conjugation</b>         | Unconjugated   |
| <b>Tested Applications</b> | ELISA, IHC   |
| <b>Immunogen</b>           | A synthesized peptide derived from human Alpha Synuclein   |
| <b>Target</b>              | SNCA   |
| <b>Preservatives</b>       | Rabbit IgG in phosphate buffered saline, pH 7.4, 150mM NaCl, 0.02% sodium azide and 50% glycerol.  |
| <b>Form/Appearance</b>     | Liquid   |
| <b>Storage</b>             | Maintain refrigerated at 2-8°C for up to 2 weeks.<br>For long term storage store at -20°C in small aliquots to prevent freeze-thaw cycles. |
| <b>Note</b>                | For research use only  |
| <b>Isotype</b>             | Rabbit IgG   |
| <b>Clonality</b>           | Monoclonal   |
| <b>Uniprot ID</b>          | <b>P37840</b>  |
| <b>Dilution Range</b>      | IHC-P:1:50-1:200   |
| <b>Expiration Date</b>     | 12 months from date of receipt.  |



Immunohistochemical staining of human sk...