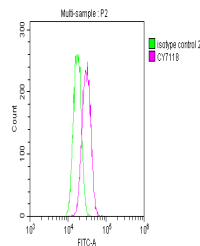


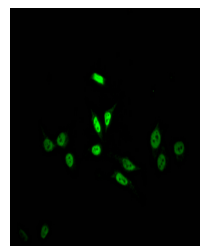
Product Datasheet

SKP2 antibody (orb689111)

Description	Rabbit monoclonal antibody to SKP2
Species/Host	Rabbit
Reactivity	Human
Conjugation	Unconjugated
Tested Applications	ELISA, FC, IF
Immunogen	A synthesized peptide derived from human SKP2
Target	SKP2
Preservatives	Rabbit IgG in phosphate buffered saline, pH 7.4, 150mM NaCl, 0.02% sodium azide and 50% glycerol.
Form/Appearance	Liquid
Storage	Upon receipt, store at -20°C or -80°C. Avoid repeated freeze.
Note	For research use only
Isotype	Rabbit IgG
Clonality	Monoclonal
Uniprot ID	Q13309
Expiration Date	12 months from date of receipt.



Flow cytometric analysis of HeLa cells u...



Immunofluorescence analysis of HepG2 Cel...