
Product Datasheet

S6 Ribosomal Protein (phospho-Ser240/244) antibody (orb6891)

Description

S6 Ribosomal Protein (phospho-


Species/Host

Rabbit

Reactivity

Human, Mouse, Rat

Conjugation

Unconjugated

Tested Applications

FC, IHC-P, WB

Immunohistochemical staining of human lu...

Immunogen

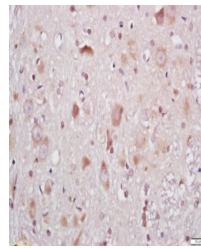
KLH conjugated Synthesised phosphopeptide derived from human RPS6 around the phosphorylation site of Ser240/244 (RA(p-S)TSK(p-S)ES)

Target

Phospho-RPS6 (Ser240 + Ser244)

Preservatives

0.01M TBS(pH7.4) with 1% rAlbumin, 0.03% Proclin300 and 50% Glycerol.



Immunohistochemical staining of rat brai...

Form/Appearance

Liquid

Concentration

1mg/ml

Storage

Shipped at 4°C. Store at -20 °C for one year. Avoid repeated freeze/thaw cycles.

Note

For research use only

Isotype

IgG

Clonality

Polyclonal

MW

29 kDa

Uniprot ID

[P62753](#)

Dilution Range

WB=1:100-1000 , IHC-P=1:100-500, IHC-F=1:100-500, IF=1:100-500, ELISA=1:100-1000

Expiration Date

12 months from date of receipt.