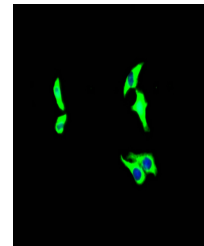


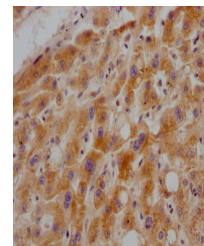
Product Datasheet

GHR antibody (orb689087)

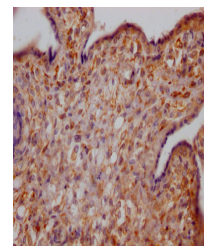
Description	Rabbit monoclonal antibody to GHR
Species/Host	Rabbit
Reactivity	Human
Conjugation	Unconjugated
Tested Applications	ELISA, IF, IHC
Immunogen	A synthesized peptide derived from human Growth hormone receptor
Target	GHR
Preservatives	Rabbit IgG in phosphate buffered saline, pH 7.4, 150mM NaCl, 0.02% sodium azide and 50% glycerol.
Form/Appearance	Liquid
Storage	Upon receipt, store at -20°C or -80°C. Avoid repeated freeze.
Note	For research use only
Isotype	Rabbit IgG
Clonality	Monoclonal
Uniprot ID	P10912
Dilution Range	IHC-P:1:50-1:200, IF:1:20-1:200
Expiration Date	12 months from date of receipt.



Immunofluorescence analysis of HepG2 Cel...



Immunohistochemical staining of human li...



Immunohistochemical staining of human pl...