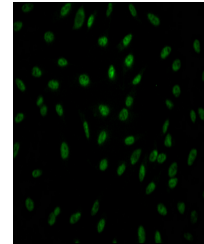


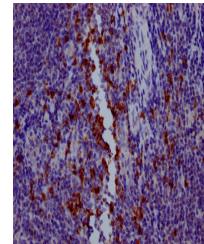
## Product Datasheet

### GZMB antibody (orb689053)

<b>Description</b>	Rabbit monoclonal antibody to GZMB
<b>Species/Host</b>	Rabbit
<b>Reactivity</b>	Human
<b>Conjugation</b>	Unconjugated
<b>Tested Applications</b>	ELISA, IF, IHC
<b>Immunogen</b>	A synthesized peptide derived from human Granzyme B
<b>Target</b>	GZMB
<b>Preservatives</b>	Rabbit IgG in phosphate buffered saline, pH 7.4, 150mM NaCl, 0.02% sodium azide and 50% glycerol.
<b>Form/Appearance</b>	Liquid
<b>Storage</b>	Upon receipt, store at -20°C or -80°C. Avoid repeated freeze.
<b>Note</b>	For research use only
<b>Isotype</b>	Rabbit IgG
<b>Clonality</b>	Monoclonal
<b>Uniprot ID</b>	<b>P10144</b>
<b>Dilution Range</b>	IHC-P:1:50-1:200, IF:1:20-1:200
<b>Expiration Date</b>	12 months from date of receipt.



Immunofluorescence analysis of HeLa cell...



Immunohistochemical staining of human to...