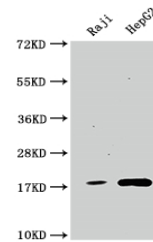


Product Datasheet

PPIA antibody (orb689043)

Description	Rabbit monoclonal antibody to PPIA
Species/Host	Rabbit
Reactivity	Human
Conjugation	Unconjugated
Tested Applications	ELISA, WB
Immunogen	A synthesized peptide derived from human Cyclophilin A
Target	PPIA
Preservatives	Rabbit IgG in phosphate buffered saline, pH 7.4, 150mM NaCl, 0.02% sodium azide and 50% glycerol.
Form/Appearance	Liquid
Storage	Upon receipt, store at -20°C or -80°C. Avoid repeated freeze.
Note	For research use only
Isotype	Rabbit IgG
Clonality	Monoclonal
Uniprot ID	P62937
Dilution Range	Recommended dilution: WB:1:500-1:5000
Expiration Date	12 months from date of receipt.



Western blot analysis of Raji whole cell...