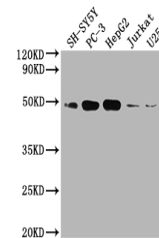


Product Datasheet

S1PR1 antibody (orb689042)

Description	Rabbit monoclonal antibody to S1PR1
Species/Host	Rabbit
Reactivity	Human
Conjugation	Unconjugated
Tested Applications	ELISA, WB
Immunogen	A synthesized peptide derived from human EDG1
Target	S1PR1
Preservatives	Rabbit IgG in phosphate buffered saline, pH 7.4, 150mM NaCl, 0.02% sodium azide and 50% glycerol.
Form/Appearance	Liquid
Storage	Maintain refrigerated at 2-8°C for up to 2 weeks. For long term storage store at -20°C in small aliquots to prevent freeze-thaw cycles.
Note	For research use only
Isotype	Rabbit IgG
Clonality	Monoclonal
Uniprot ID	P21453
Dilution Range	Recommended dilution: WB:1:500-1:5000
Expiration Date	12 months from date of receipt.



Western blot analysis of SH-SY5Y whole c...