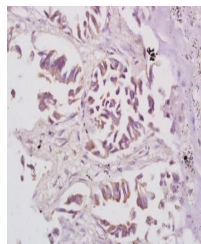


Product Datasheet

S6 Ribosomal Protein (phospho-Ser235+Ser236) antibody (orb6890)

Description	S6 Ribosomal Protein (phospho-Ser235+Ser236) antibody
Species/Host	Rabbit
Reactivity	Human, Rat
Conjugation	Unconjugated
Tested Applications	FC, IHC-P
Immunogen	KLH conjugated Synthesised phosphopeptide derived from human RPS6 around the phosphorylation site of Ser235/236 (RL(p-S)(p-S)LR)
Target	Phospho-RPS6 (Ser235+Ser236)
Preservatives	0.01M TBS(pH7.4) with 1% rAlbumin, 0.03% Proclin300 and 50% Glycerol.
Form/Appearance	Liquid
Concentration	1mg/ml
Storage	Shipped at 4°C. Store at -20 °C for one year. Avoid repeated freeze/thaw cycles.
Note	For research use only
Isotype	IgG
Clonality	Polyclonal
MW	27 kDa
Uniprot ID	P62753
Dilution Range	IHC-P=1:100-500, IHC-F=1:100-500, IF=1:100-500, ELISA=1:5000-10000
Expiration Date	12 months from date of receipt.



Immunohistochemical analysis of formalin...