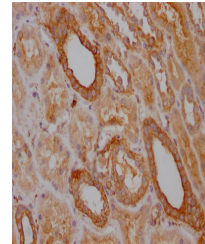


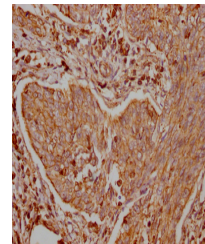
## Product Datasheet

### TRAF2 antibody (orb688997)

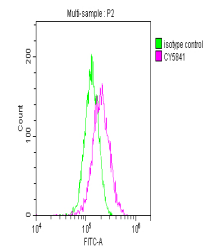
<b>Description</b>	Rabbit monoclonal antibody to TRAF2
<b>Species/Host</b>	Rabbit
<b>Reactivity</b>	Human
<b>Conjugation</b>	Unconjugated
<b>Tested Applications</b>	ELISA, FC, IHC, IP, WB
<b>Immunogen</b>	A synthesized peptide derived from human TRAF2
<b>Target</b>	TRAF2
<b>Preservatives</b>	Rabbit IgG in phosphate buffered saline, pH 7.4, 150mM NaCl, 0.02% sodium azide and 50% glycerol.
<b>Form/Appearance</b>	Liquid
<b>Storage</b>	Upon receipt, store at -20°C or -80°C. Avoid repeated freeze.
<b>Note</b>	For research use only
<b>Isotype</b>	Rabbit IgG
<b>Clonality</b>	Monoclonal
<b>Uniprot ID</b>	<b>Q12933</b>
<b>Dilution Range</b>	WB:1:500-1:5000, IHC-P:1:50-1:200, FC:1:20-1:200, IP:1:200-1:1000
<b>Expiration Date</b>	12 months from date of receipt.



Immunohistochemical staining of human kidney tissue.



Immunohistochemical staining of human cells.



Flow cytometric analysis of HeLa Cells.