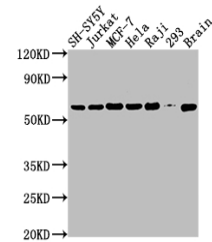


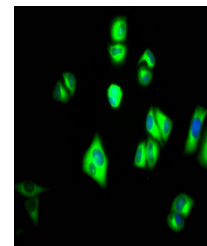
## Product Datasheet

### PKM antibody (orb688982)

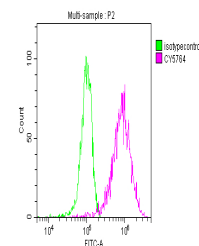
|                            |   |
|----------------------------|---|
| <b>Description</b>         | Rabbit monoclonal antibody to PKM   |
| <b>Species/Host</b>        | Rabbit  |
| <b>Reactivity</b>          | Human, Mouse  |
| <b>Conjugation</b>         | Unconjugated  |
| <b>Tested Applications</b> | ELISA, FC, IF, IHC, IP, WB  |
| <b>Immunogen</b>           | A synthesized peptide derived from human PKM2   |
| <b>Target</b>              | PKM   |
| <b>Preservatives</b>       | Rabbit IgG in phosphate buffered saline, pH 7.4, 150mM NaCl, 0.02% sodium azide and 50% glycerol.                                       |
| <b>Form/Appearance</b>     | Liquid  |
| <b>Storage</b>             | Maintain refrigerated at 2-8°C for up to 2 weeks. For long term storage store at -20°C in small aliquots to prevent freeze-thaw cycles. |
| <b>Note</b>                | For research use only   |
| <b>Isotype</b>             | Rabbit IgG  |
| <b>Clonality</b>           | Monoclonal  |
| <b>Uniprot ID</b>          | <b>P14618</b>   |
| <b>Dilution Range</b>      | WB:1:500-1:5000, IHC-P:1:50-1:200, IF:1:20-1:200, FC:1:20-1:200, IP:1:200-1:1000  |
| <b>Expiration Date</b>     | 12 months from date of receipt.   |



Western blot analysis of SH-SY5Y whole c...



Immunofluorescence analysis of HeLa Cell...



Flow cytometric analysis of HepG2 cells ...