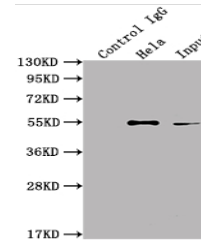


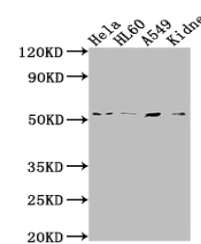
Product Datasheet

ILK antibody (orb688973)

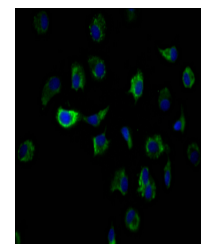
Description	Rabbit monoclonal antibody to ILK
Species/Host	Rabbit
Reactivity	Human, Mouse
Conjugation	Unconjugated
Tested Applications	ELISA, IF, IP, WB
Immunogen	A synthesized peptide derived from human ILK
Target	ILK
Preservatives	Rabbit IgG in phosphate buffered saline, pH 7.4, 150mM NaCl, 0.02% sodium azide and 50% glycerol.
Form/Appearance	Liquid
Storage	Maintain refrigerated at 2-8°C for up to 2 weeks. For long term storage store at -20°C in small aliquots to prevent freeze-thaw cycles.
Note	For research use only
Isotype	Rabbit IgG
Clonality	Monoclonal
Uniprot ID	Q13418
Expiration Date	12 months from date of receipt.



Immunoprecipitation analysis of HeLa who...



Western blot analysis of HeLa whole cell...



Immunofluorescence analysis of MCF7 Cell...