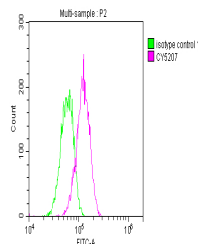


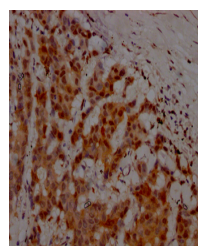
## Product Datasheet

### ATM antibody (orb688955)

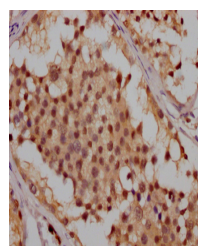
<b>Description</b>	Rabbit monoclonal antibody to ATM
<b>Species/Host</b>	Rabbit
<b>Reactivity</b>	Human
<b>Conjugation</b>	Unconjugated
<b>Tested Applications</b>	ELISA, FC, IHC
<b>Immunogen</b>	A synthesized peptide derived from human ATM
<b>Target</b>	ATM
<b>Preservatives</b>	Rabbit IgG in phosphate buffered saline, pH 7.4, 150mM NaCl, 0.02% sodium azide and 50% glycerol.
<b>Form/Appearance</b>	Liquid
<b>Storage</b>	Maintain refrigerated at 2-8°C for up to 2 weeks. For long term storage store at -20°C in small aliquots to prevent freeze-thaw cycles.
<b>Note</b>	For research use only
<b>Isotype</b>	Rabbit IgG
<b>Clonality</b>	Monoclonal
<b>Uniprot ID</b>	<a href="#">Q13315</a>
<b>Dilution Range</b>	IHC-P:1:50-1:200, FC:1:20-1:200
<b>Expiration Date</b>	12 months from date of receipt.



Flow cytometric analysis of HeLa Cells  
u...



Immunohistochemical staining of human  
br...



Immunohistochemical staining of human  
te...