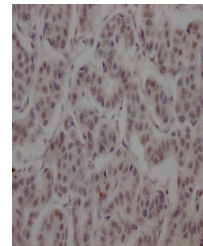


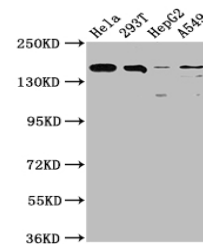
## Product Datasheet

### BRD4 antibody (orb688937)

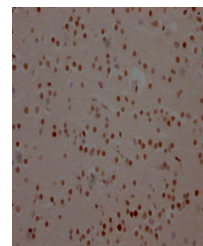
<b>Description</b>	Rabbit monoclonal antibody to BRD4
<b>Species/Host</b>	Rabbit
<b>Reactivity</b>	Human
<b>Conjugation</b>	Unconjugated
<b>Tested Applications</b>	ELISA, IHC, WB
<b>Immunogen</b>	A synthesized peptide derived from human Brd4
<b>Target</b>	BRD4
<b>Preservatives</b>	Rabbit IgG in phosphate buffered saline, pH 7.4, 150mM NaCl, 0.02% sodium azide and 50% glycerol.
<b>Form/Appearance</b>	Liquid
<b>Storage</b>	Maintain refrigerated at 2-8°C for up to 2 weeks. For long term storage store at -20°C in small aliquots to prevent freeze-thaw cycles.
<b>Note</b>	For research use only
<b>Isotype</b>	Rabbit IgG
<b>Clonality</b>	Monoclonal
<b>Uniprot ID</b>	<a href="#">O60885</a>
<b>Dilution Range</b>	WB:1:500-1:5000, IHC-P:1:50-1:200
<b>Expiration Date</b>	12 months from date of receipt.



Immunohistochemical staining of human brain tissue showing BRD4 expression.



Western blot analysis of HeLa whole cell lysates showing BRD4 expression.



Immunohistochemical staining of human brain tissue showing BRD4 expression.