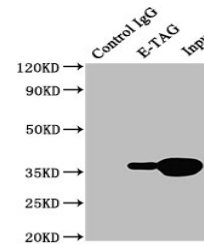


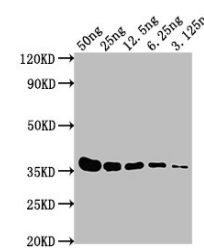
Product Datasheet

E-Tag antibody (orb688919)

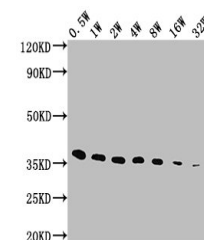
Description	E-Tag antibody
Species/Host	Mouse
Reactivity	All
Conjugation	Unconjugated
Tested Applications	ELISA, IP, WB
Immunogen	GAPVPYPDPLEPRC synthetic peptide conjugate to KLH
Target	E-Tag
Preservatives	Preservative: 0.03% Proclin 300. Constituents: 50% Glycerol
Form/Appearance	Liquid
Storage	Maintain refrigerated at 2-8°C for up to 2 weeks. For long term storage store at -20°C in small aliquots to prevent freeze-thaw cycles.
Note	For research use only
Isotype	IgG1
Clonality	Monoclonal
Dilution Range	ELISA:1:4000-1:8000, WB:1:1000-1:320000, IP:1µg-5µg
Expiration Date	12 months from date of receipt.



Immunoprecipitation analysis of 293F tra...



Western blot analysis of Human Lung Carc...



Western blot analysis of fusion protein ...