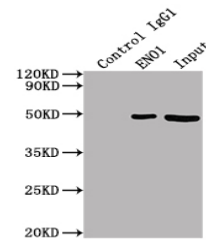


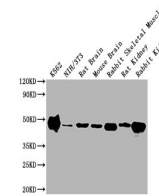
Product Datasheet

ENO1 antibody (orb688875)

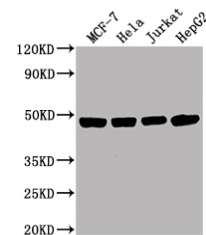
| | |
|----------------------------|---|
| Description | ENO1 antibody |
| Species/Host | Mouse |
| Reactivity | Human, Mouse, Rabbit, Rat |
| Conjugation | Unconjugated |
| Tested Applications | ELISA, FC, IF, IHC, IP, WB |
| Immunogen | Recombinant Human Alpha-enolase protein (2-434AA) |
| Target | ENO1 |
| Preservatives | Preservative: 0.03% Proclin 300. Constituents: 50% Glycerol |
| Form/Appearance | Liquid |
| Storage | Upon receipt, store at -20°C or -80°C. Avoid repeated freeze. |
| Note | For research use only |
| Isotype | IgG1 |
| Clonality | Monoclonal |
| Uniprot ID | P06733 |
| Dilution Range | WB: 1:5000-1:320000, IHC-P:1:200-1:500, IF:1:50-1:200, FC:1:100-1:300, IP:1 µl-4 µl |
| Expiration Date | 12 months from date of receipt. |



Immunoprecipitation analysis of HepG2 wh...



Western blot analysis of Human Colon Car...



Western blot analysis of MCF-7 whole cel...