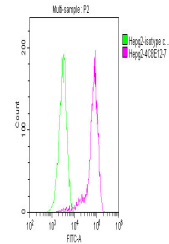


Product Datasheet

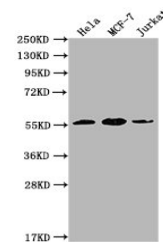
PKM antibody (orb688873)

Description	PKM antibody
Species/Host	Mouse
Reactivity	Human, Mouse
Conjugation	Unconjugated
Tested Applications	ELISA, FC, IF, IHC, IP, WB
Immunogen	Recombinant Human Pyruvate kinase PKM protein (2-531AA)
Target	PKM
Preservatives	Preservative: 0.03% Proclin 300. Constituents: 50% Glycerol
Form/Appearance	Liquid
Storage	Upon receipt, store at -20°C or -80°C. Avoid repeated freeze.
Note	For research use only
Isotype	IgG1
Clonality	Monoclonal
Uniprot ID	P14618
Dilution Range	WB:1:4000-1:512000, IHC-P:1:500-1:1000, IF:1:150-1:300, FC:1:50-1:100, IP:1 µl-4 µl
Expiration Date	12 months from date of receipt.

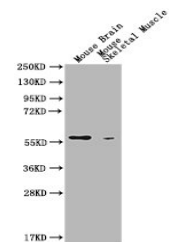


Flow cytometric analysis of HepG2 cells

...



Western blot analysis of Human Colon Car...



Western blot analysis of Mouse Brain tis...