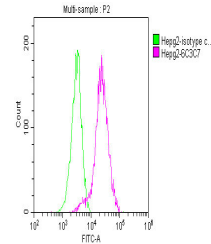


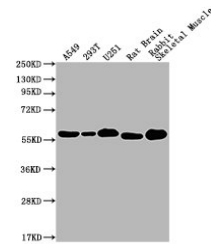
## Product Datasheet

### PKM antibody (orb688872)

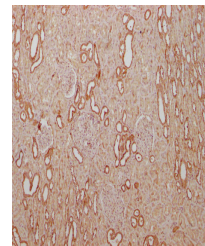
<b>Description</b>	PKM antibody
<b>Species/Host</b>	Mouse
<b>Reactivity</b>	Human, Mouse, Rabbit, Rat
<b>Conjugation</b>	Unconjugated
<b>Tested Applications</b>	ELISA, FC, IF, IHC, IP, WB
<b>Immunogen</b>	Recombinant Human Pyruvate kinase PKM protein (2-531AA)
<b>Target</b>	PKM
<b>Preservatives</b>	Preservative: 0.03% Proclin 300. Constituents: 50% Glycerol
<b>Form/Appearance</b>	Liquid
<b>Storage</b>	Maintain refrigerated at 2-8°C for up to 2 weeks. For long term storage store at -20°C in small aliquots to prevent freeze-thaw cycles.
<b>Note</b>	For research use only
<b>Isotype</b>	IgG1
<b>Clonality</b>	Monoclonal
<b>Uniprot ID</b>	<b>P14618</b>
<b>Dilution Range</b>	WB:1:4000-1:256000, IHC-P:1:200-1:500, IF:1:150-1:300, FC:1:50-1:200, IP:1 µl-4 µl
<b>Expiration Date</b>	12 months from date of receipt.



Flow cytometric analysis of HepG2 cells ...



Western blot analysis of Human Colon Car...



Immunohistochemical staining of human ki...