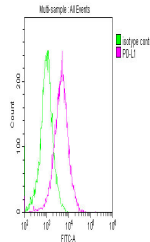


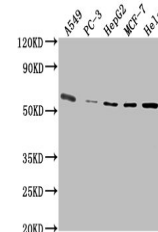
Product Datasheet

PD-L1 antibody (orb688863)

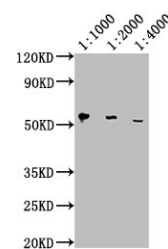
Description	PD-L1 antibody
Species/Host	Mouse
Reactivity	Human
Conjugation	Unconjugated
Tested Applications	ELISA, FC, IF, IHC, WB
Immunogen	Recombinant Human Programmed cell death 1 ligand 1 protein (19-238AA)
Target	PD-L1
Preservatives	Preservative: 0.03% Proclin 300. Constituents: 50% Glycerol
Form/Appearance	Liquid
Storage	Maintain refrigerated at 2-8°C for up to 2 weeks. For long term storage store at -20°C in small aliquots to prevent freeze-thaw cycles.
Note	For research use only
Isotype	IgG2b
Clonality	Monoclonal
Uniprot ID	Q9NZQ7
Dilution Range	WB:1:1000-1:5000, IHC-P:1:50-1:200, IF:1:50-1:200, FC:1:100-1:300
Expiration Date	12 months from date of receipt.



Flow cytometric analysis of HeLa cells u...



Western blot analysis of Human Brain Tis...



Western blot analysis of HeLa whole cell...