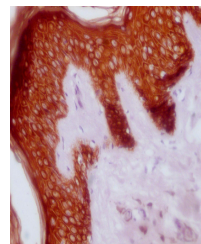


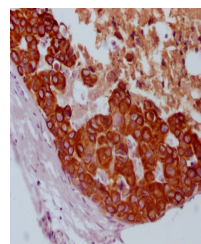
Product Datasheet

KRT14 antibody (orb688848)

| | |
|----------------------------|---|
| Description | KRT14 antibody |
| Species/Host | Mouse |
| Reactivity | Human |
| Conjugation | Unconjugated |
| Tested Applications | ELISA, IHC |
| Immunogen | Synthesized peptide derived from human Cytokeratin Pan |
| Target | KRT14/KRT16/KRT5/KRT6A/KRT8 |
| Preservatives | Liquid in PBS containing 50% glycerol, 0.5% rAlbumin and 0.02% sodium azide. |
| Form/Appearance | Liquid |
| Storage | Maintain refrigerated at 2-8°C for up to 2 weeks. For long term storage store at -20°C in small aliquots to prevent freeze-thaw cycles. |
| Note | For research use only |
| Isotype | IgG2b, Kappa |
| Clonality | Monoclonal |
| Uniprot ID | P02533 , P08779 , P13647 , P05787 , P02538 |
| Dilution Range | IHC-P:1:20-1:200 |
| Expiration Date | 12 months from date of receipt. |



Immunohistochemical staining of human sk...



Immunohistochemical staining of Rat Test...