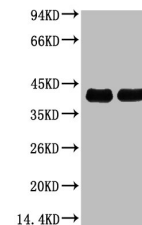


Product Datasheet

Plant actin antibody (orb688435)

| | |
|----------------------------|---|
| Description | Plant actin antibody |
| Species/Host | Mouse |
| Reactivity | Plant |
| Conjugation | Unconjugated |
| Tested Applications | ELISA, WB |
| Immunogen | Recombinant Protein |
| Target | Plant actin |
| Preservatives | PBS, pH 7.4, containing 0.02% sodium azide as Preservative and 50% Glycerol. |
| Form/Appearance | liquid |
| Storage | Maintain refrigerated at 2-8°C for up to 2 weeks. For long term storage store at -20°C in small aliquots to prevent freeze-thaw cycles. |
| Note | For research use only |
| Isotype | IgG |
| Clonality | Monoclonal |
| Expiration Date | 12 months from date of receipt. |



Western blot analysis of Arabidopsis protein extract.