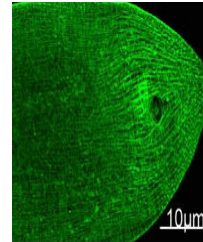


## Product Datasheet

### Myosin Heavy Chain antibody (orb688376)

<b>Description</b>	Myosin Heavy Chain antibody
<b>Species/Host</b>	Mouse
<b>Reactivity</b>	Human, Insect, Mouse, Other, Plant, Rat
<b>Conjugation</b>	Unconjugated
<b>Tested Applications</b>	ELISA, IF
<b>Immunogen</b>	Synthetic Peptide
<b>Target</b>	Myosin Heavy Chain
<b>Preservatives</b>	PBS, pH 7.4, containing 0.02% sodium azide as Preservative and 50% Glycerol.
<b>Form/Appearance</b>	liquid
<b>Storage</b>	Maintain refrigerated at 2-8°C for up to 2 weeks. For long term storage store at -20°C in small aliquots to prevent freeze-thaw cycles.
<b>Note</b>	For research use only
<b>Isotype</b>	IgG
<b>Clonality</b>	Monoclonal
<b>Expiration Date</b>	12 months from date of receipt.



Immunofluorescence analysis of nematode ...