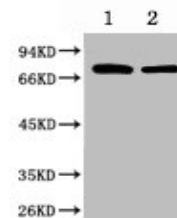


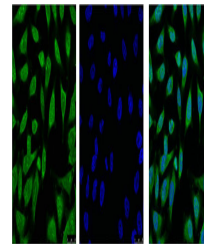
Product Datasheet

HSPA1L antibody (orb688360)

Description	HSPA1L antibody
Species/Host	Mouse
Reactivity	Human, Mouse, Rat
Conjugation	Unconjugated
Tested Applications	ELISA, IF, IHC, WB
Immunogen	Synthetic Peptide
Target	HSPA1L
Preservatives	PBS, pH 7.4, containing 0.02% sodium azide as Preservative and 50% Glycerol.
Form/Appearance	liquid
Storage	Maintain refrigerated at 2-8°C for up to 2 weeks. For long term storage store at -20°C in small aliquots to prevent freeze-thaw cycles.
Note	For research use only
Isotype	IgG
Clonality	Monoclonal
Uniprot ID	P08107, P34931
Dilution Range	WB:1:500-1:5000, IHC-P:1:50-1:500, IF:1:50-1:200
Expiration Date	12 months from date of receipt.



Western blot analysis of 1) HeLa, 2) Mou...



Immunofluorescence analysis of HeLa usin...