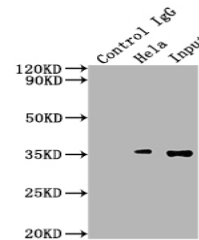


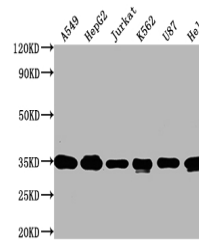
Product Datasheet

SUMF2 antibody (orb688304)

Description	SUMF2 antibody
Species/Host	Rabbit
Reactivity	Human
Conjugation	Unconjugated
Tested Applications	ELISA, IP, WB
Immunogen	Recombinant Human Sulfatase-modifying factor 2 protein (26-301AA)
Target	SUMF2
Preservatives	Preservative: 0.03% Proclin 300. Constituents: 50% Glycerol
Form/Appearance	Liquid
Storage	Maintain refrigerated at 2-8°C for up to 2 weeks. For long term storage store at -20°C in small aliquots to prevent freeze-thaw cycles.
Note	For research use only
Isotype	IgG
Clonality	Polyclonal
Uniprot ID	Q8NBJ7
Dilution Range	WB: 1: 1000-1: 5000, IP: 1: 1000-1: 2000
Expiration Date	12 months from date of receipt.



Immunoprecipitation analysis of HeLa who...



Western blot analysis of A549 whole cell...